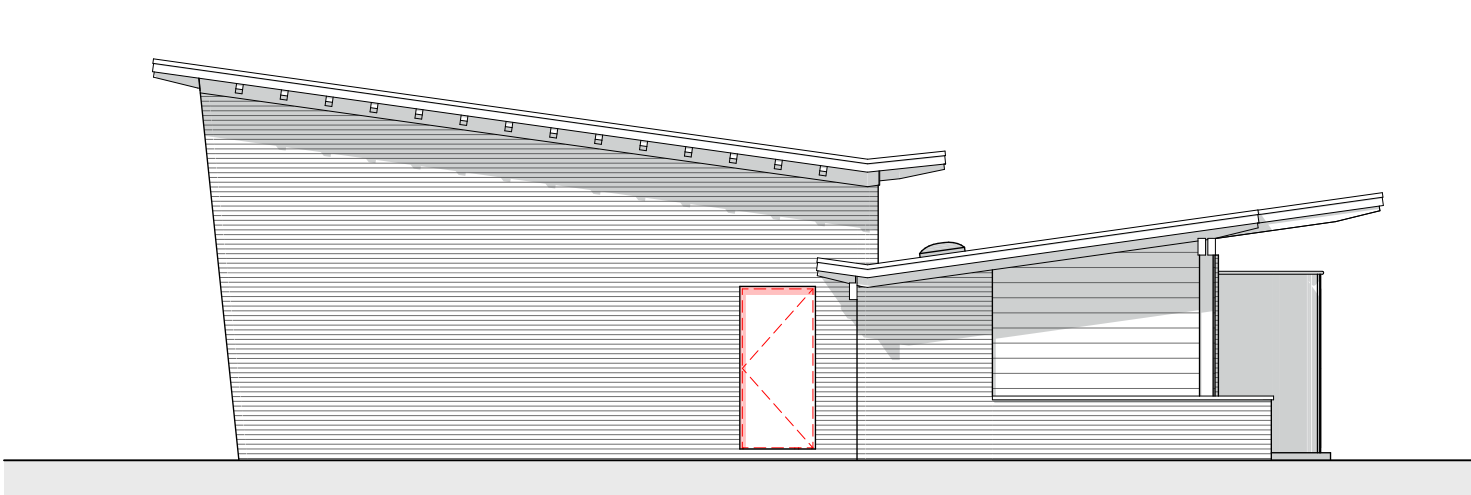
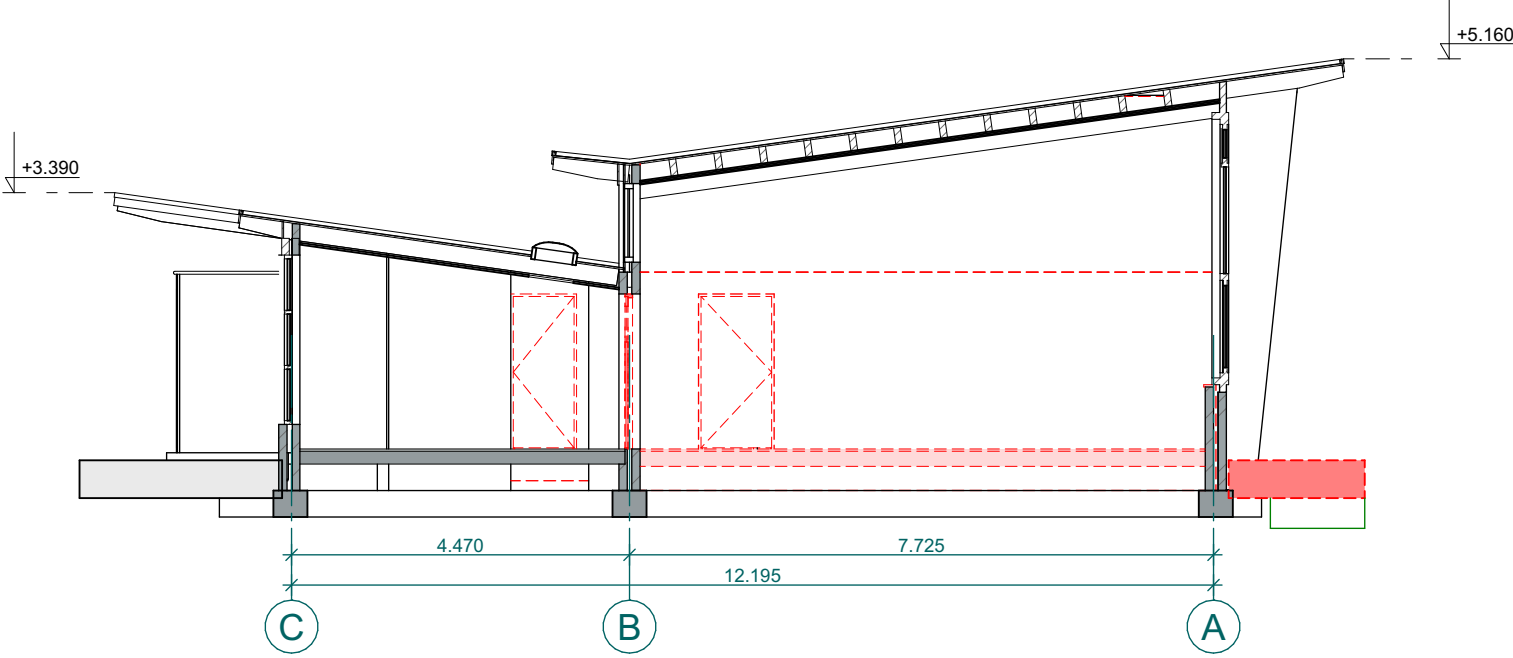


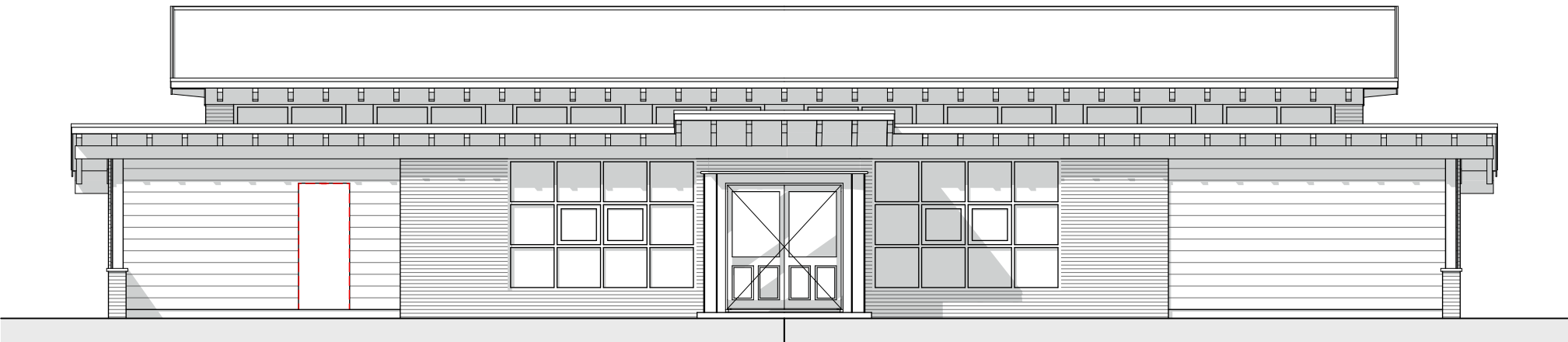
Voorgevel



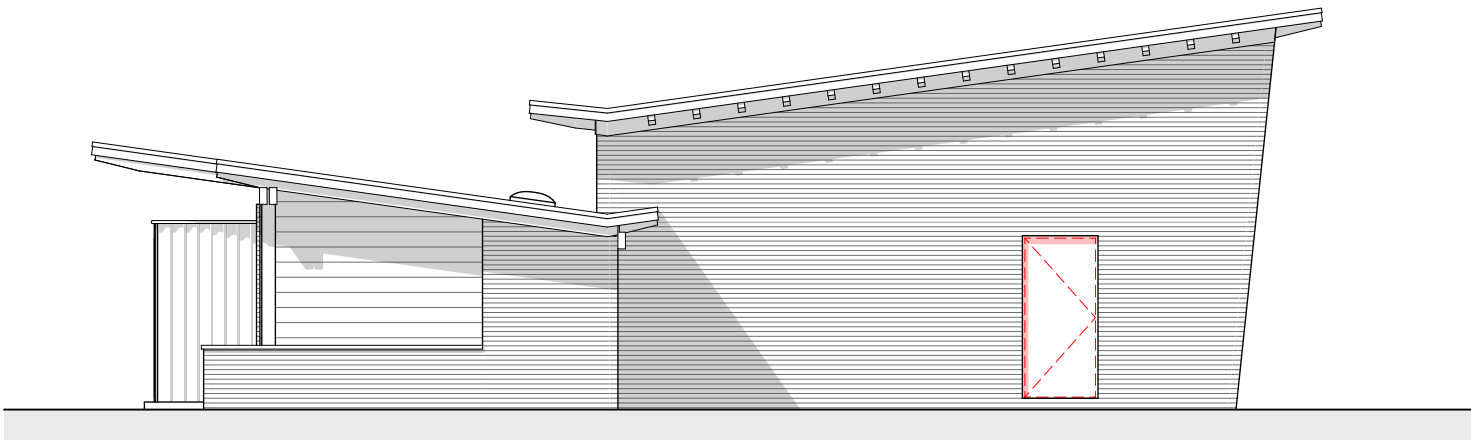
Rechtergevel



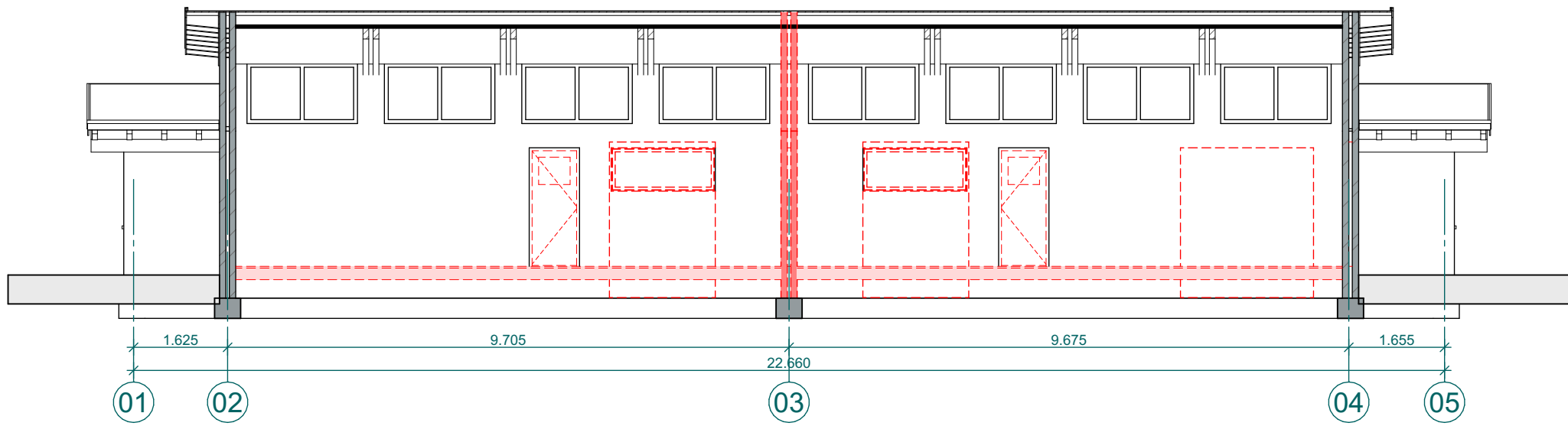
Doorsnede A-A



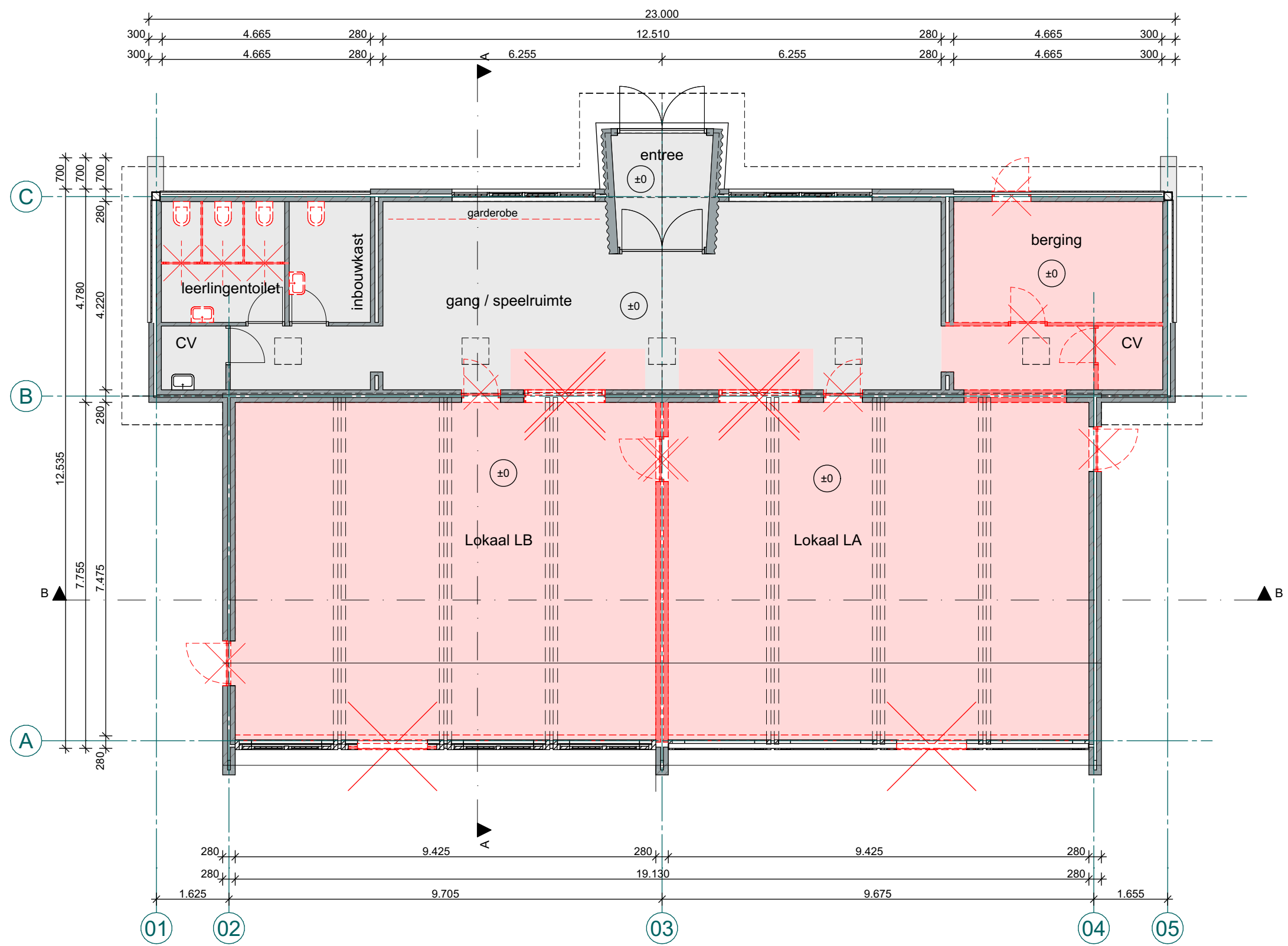
Achtergevel



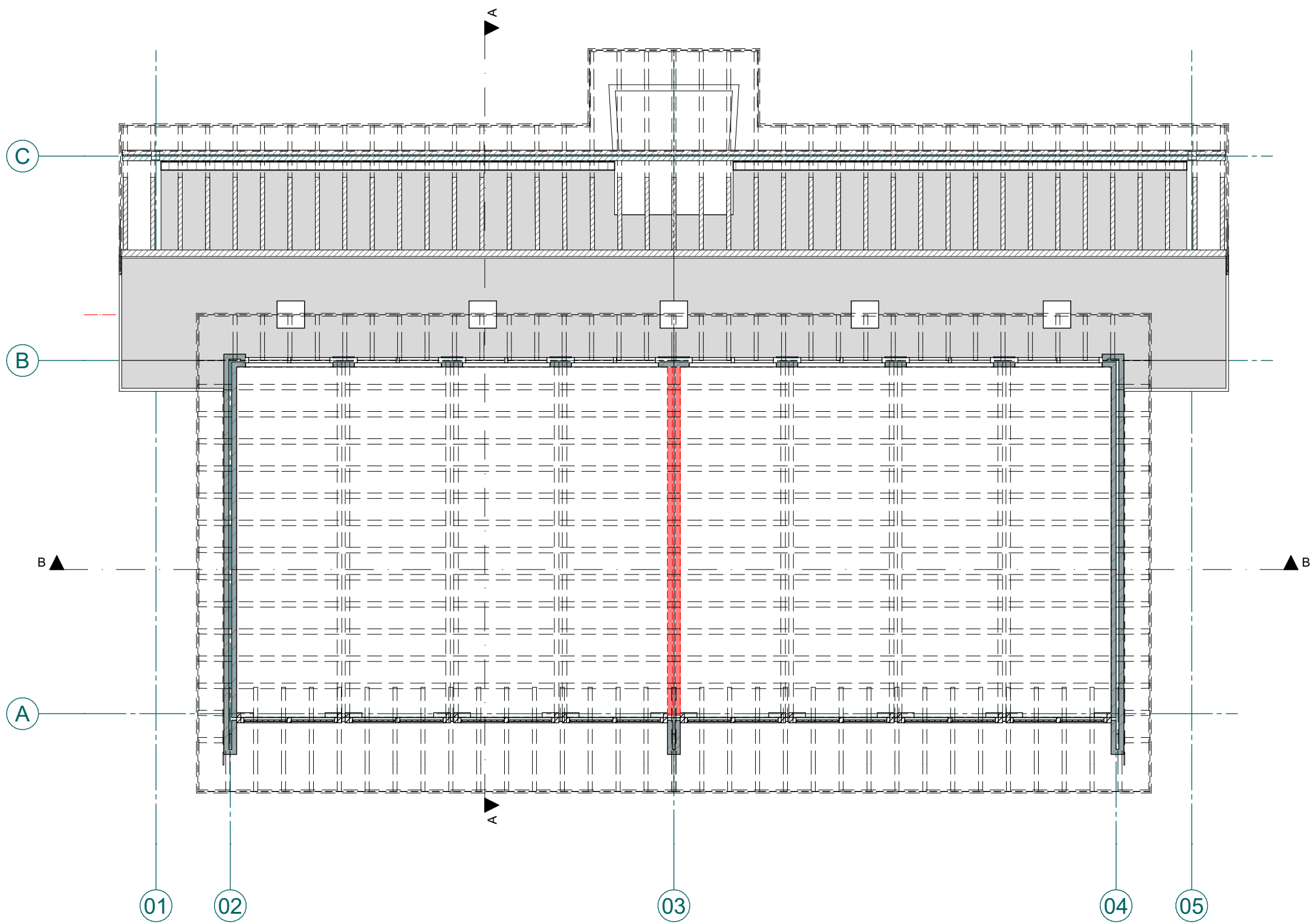
Linkergevel



Doorsnede B-B



Begane grond



1e verdieping

opdrachtgever  
De Haarlemse Montessorischool  
Louise de Colignylaan 3 Haarlem

project  
De Haarlemse Montessorischool  
revitalisatie gebouwen  
Louise de Colignylaan en de Churchillaan

fase  
Voorontwerp

onderwerp  
Plattegronden, gevels, doorsneden (te slopen onderdelen)

schaal  
1:100

formaat  
841x594

getekend  
ontwerp

datum  
14-07-2023

datum wijziging

blad  
VO-03

projectnr.  
22039

**MA·KR**  
Maas Kristinsson Architecten

1<sup>st</sup> Et 1  
7241 AK Lochem  
+31 (0)573 222 180  
info@ma-kr.nl

Henriëtte van Lijndenlaan 1  
3703 AS Zeist  
+31 (0)30 2080 877  
www.ma-kr.nl